

## FTP Monitor Application

The FTP Monitor application performs the following main functions:

1. Periodically monitors the files to be uploaded.
2. Automatically compresses and encrypts the files to be uploaded.
3. Automatically connects to the FTP Server and performs the file upload process.
4. Periodically monitors the files to be downloaded.
5. Automatically downloads files from the FTP Server.

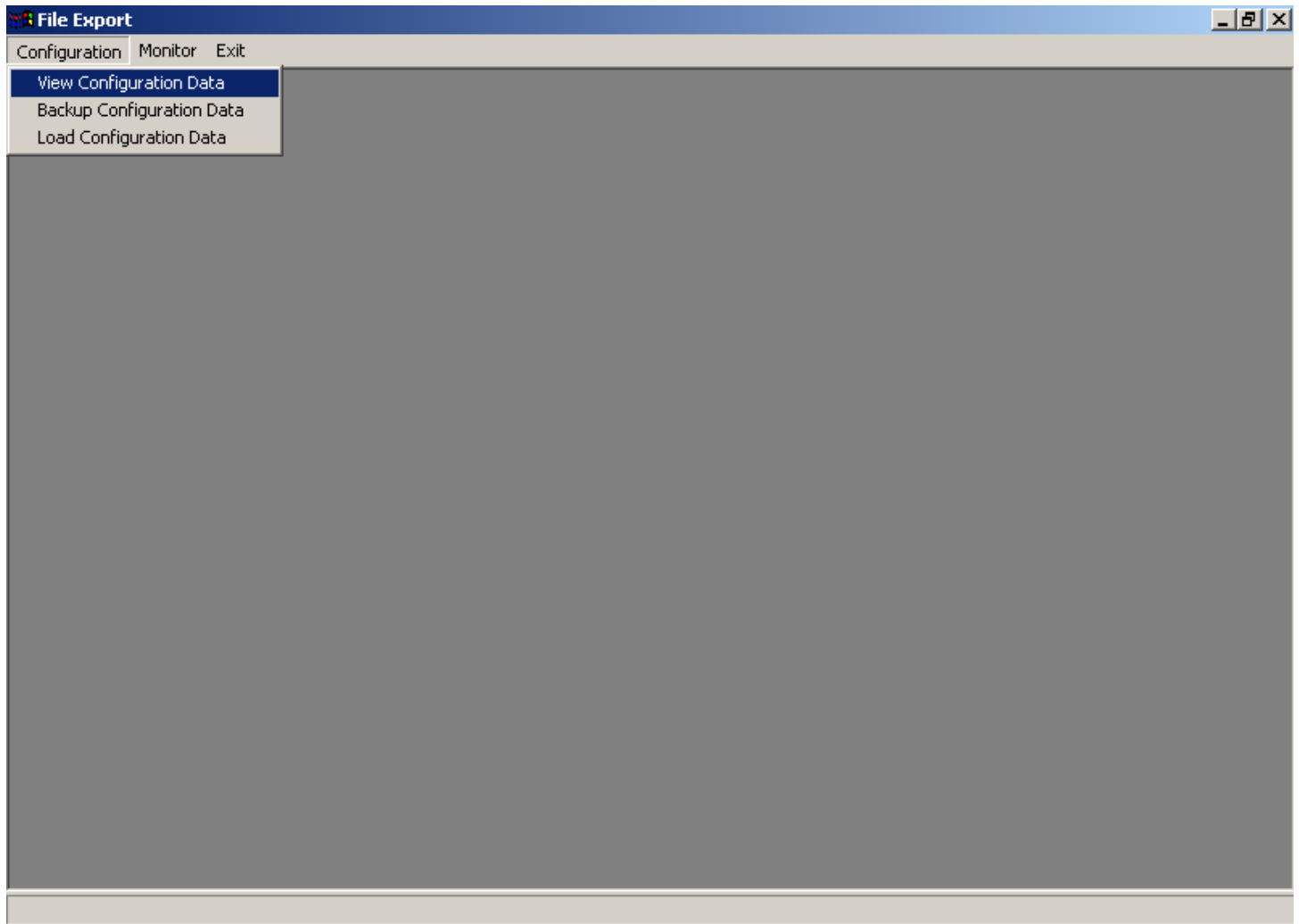
### Installation

Please run the “**setup.exe**” file in the “**File Export\Package**” folder to install the File Monitor Application on your system.

The set up will install the application in the “**\Program Files\File Export**” folder and will create a short-cut in the “**Start-Programs**” menu.

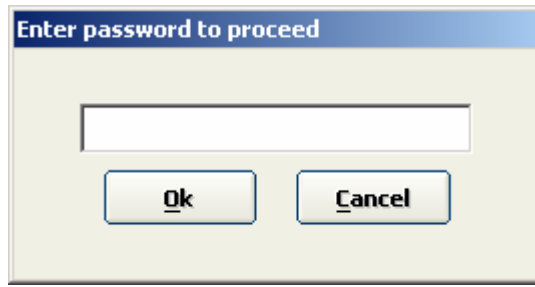
### Main Menu Screen

The Main Menu Screen includes menus to operate this package. To configure “Download” or “Upload” files go to “View Configuration”.



### Password Screen

Before display of the “Configuration Screen” the password screen appears (for security purpose).

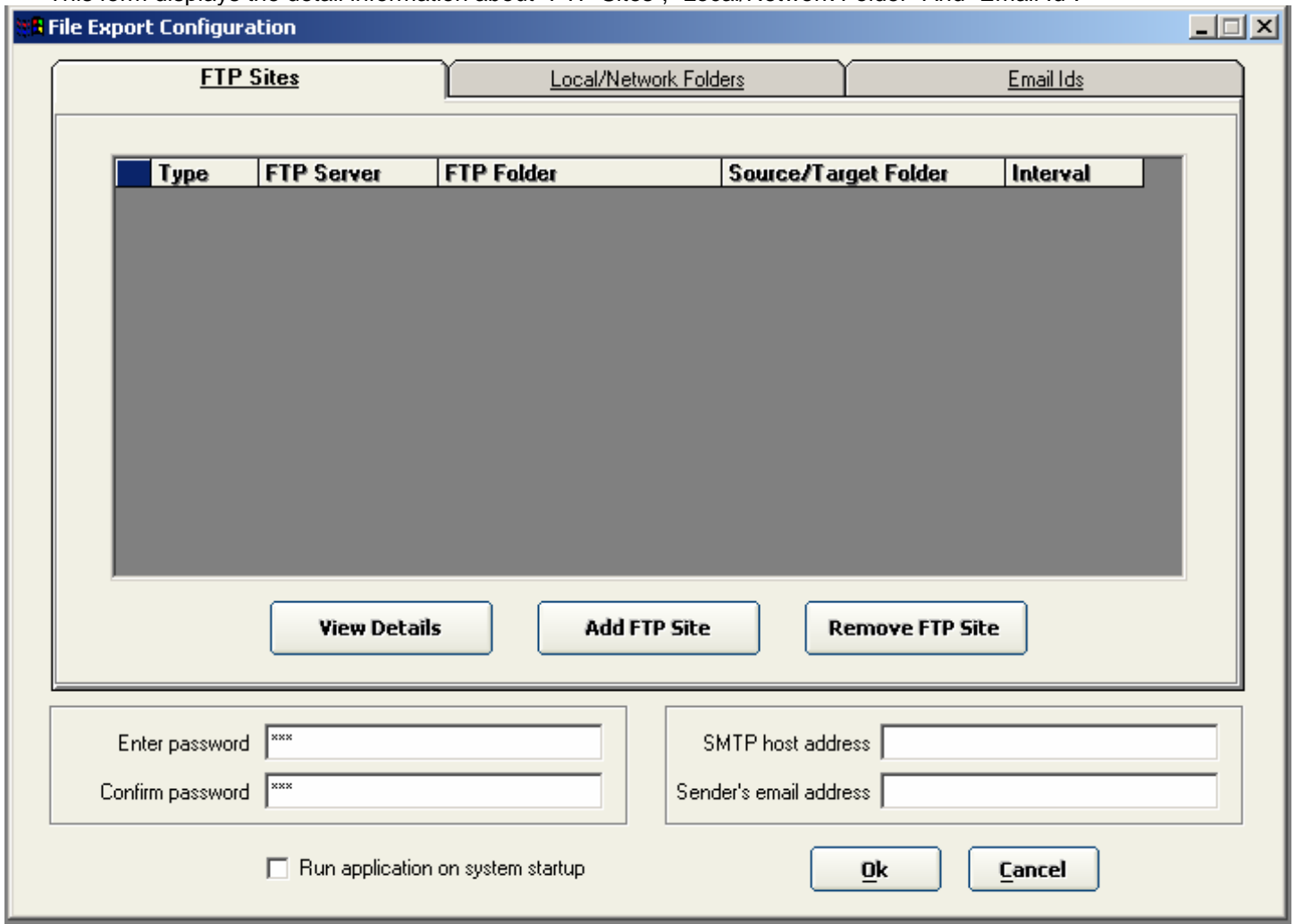


### **Default Password**

When the application starts, you will be prompted to enter the password in order to proceed. The default password that is configured while running the installation setup is **"ABC"** (please note that passwords are case-sensitive). Enter this password the first time you run the application after installation. This password may later be modified by the user.

### **Configuration Screen**

This form displays the detail information about "FTP Sites", "Local/Network Folder" And "Email Id".



**SMTP host address:** The SMTP mail server that would send the email messages.

**Sender's email address:** A valid email address available on the specified SMTP server. When an email message is sent, this is the address that would appear as the sender's email id.

Both these data fields are mandatory, and must be valid, in order for the application to send email messages.

Both the SMTP address and the sender's email address should be configured through **Microsoft Outlook** (Tools – Accounts menu) on the computer running the application.

There is also an option for admin password and check box for Run application on system startup. The first tab displays the configuration about ftp sites. To configure a new ftp site click “Add FTP Sites” on the “FTP Site Configuration” tab.

### **Configuring a FTP site**

To configure a FTP site for monitoring, please follow these steps:

1. On the Configuration screen above, click on the **Add FTP Site** button.
2. The FTP Site Configuration screen, shown below will pop up.

**FTP Site Configuration**

FTP Server: ftp.superscore.com  
FTP Folder: \myfolder

FTP Login: xyz  
FTP Password: \*\*\*\*\*  
Confirm Password: \*\*\*\*\*

Upload files  Download files  
 Compress & encrypt files before upload

Max attempts at server connection: [ ]

Source Folder: C:\Documents and Settings\Administrator\My Documents\BlueSky [Browse]  
Backup Folder: C:\Documents and Settings\Administrator\My Documents\BlueSkyB [Browse]  
 Move compressed and encrypted files to different folder  
Move to folder: [ ] [Browse]

Delete source files after transmission

Print files upon receipt  
Files of type (enter comma-separated extensions): [ ]

Monitor at fixed intervals every  
10 seconds  
 Monitor once daily at 00:00 hours

Transmit files only if they are  
not older than [ ] seconds

Send email notification upon transmission  
Email Id: abc@yahoo.com

[Ok] [Cancel]

3. Fill in the required details.

**Note:** (i) In the FTP folder text area, please precede the name of the folder with a single backslash character “\”. E.g. if the name of your FTP folder is “myfolder”, please enter “\myfolder” in the FTP folder text area. If the root directory of the FTP server is to be configured, please enter “\” in the text area.

(ii) Enter a numeric value in the “Max attempts” text area. The value entered in this text area is the number of times the application will retry in either of the following cases:

- a. Connection to the FTP server is unsuccessful and a FTP Timeout error occurs.
- b. Connection to the FTP server is successful, but attempt to change FTP directory is unsuccessful.

In case any other unspecified error occurs, the application **will not** retry.

(iii) In case the FTP site is being configured for file upload, the **Local Folder** will mean the folder on the local machine from where files will be uploaded.

In case the FTP site is being configured for file download, the **Local Folder** will mean the folder on the local machine to where files will be downloaded.

(iv) A site may be configured to be monitored at fixed intervals every *n* seconds/ minutes/ hours, or it may be configured to be monitored at a fixed time every day.

(v) To enable the application to upload/ download files based on how old the files are, the user shall have to first check-mark the check-box highlighted in the above screenshot. Upon check-marking the check-box, the controls along side would become enabled.

The first control contains two options: **not older than & older than**.

The second control would need to be filled with a numeric value.

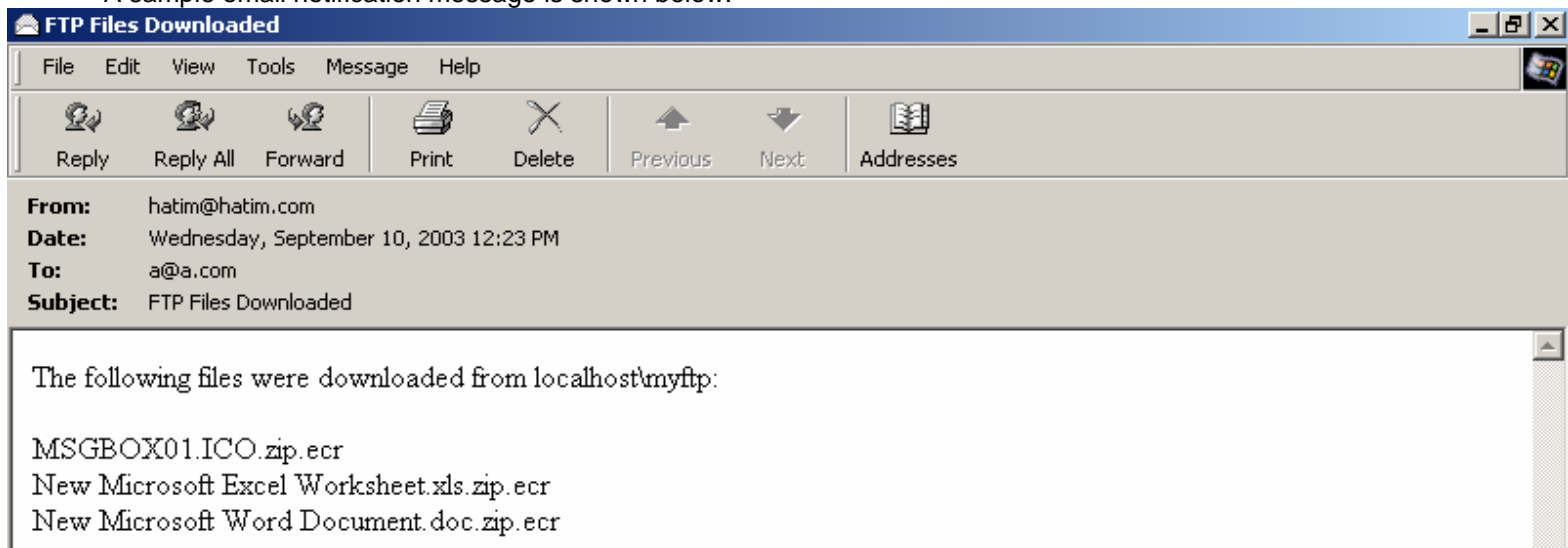
The third control contains four options: **seconds; minutes; hours & days**

(vi) When the “**Send email notification upon transmission**” check box is checked, the application will send a notification email message to the email address specified in the text box below.

The notification message will be sent only if one or more files are uploaded or downloaded.

The notification message would list all the files that have been transmitted.

A sample email notification message is shown below:



In case the email notification is not successfully sent, an error message would be displayed in the FTP monitor area.

**Note:** In case your internet connection is routed through Microsoft Proxy Server, you may experience problems connecting to the SMTP server.

(vii) Tick mark the check-box with the caption “**Print files upon receipt**” in order to print the downloaded files.

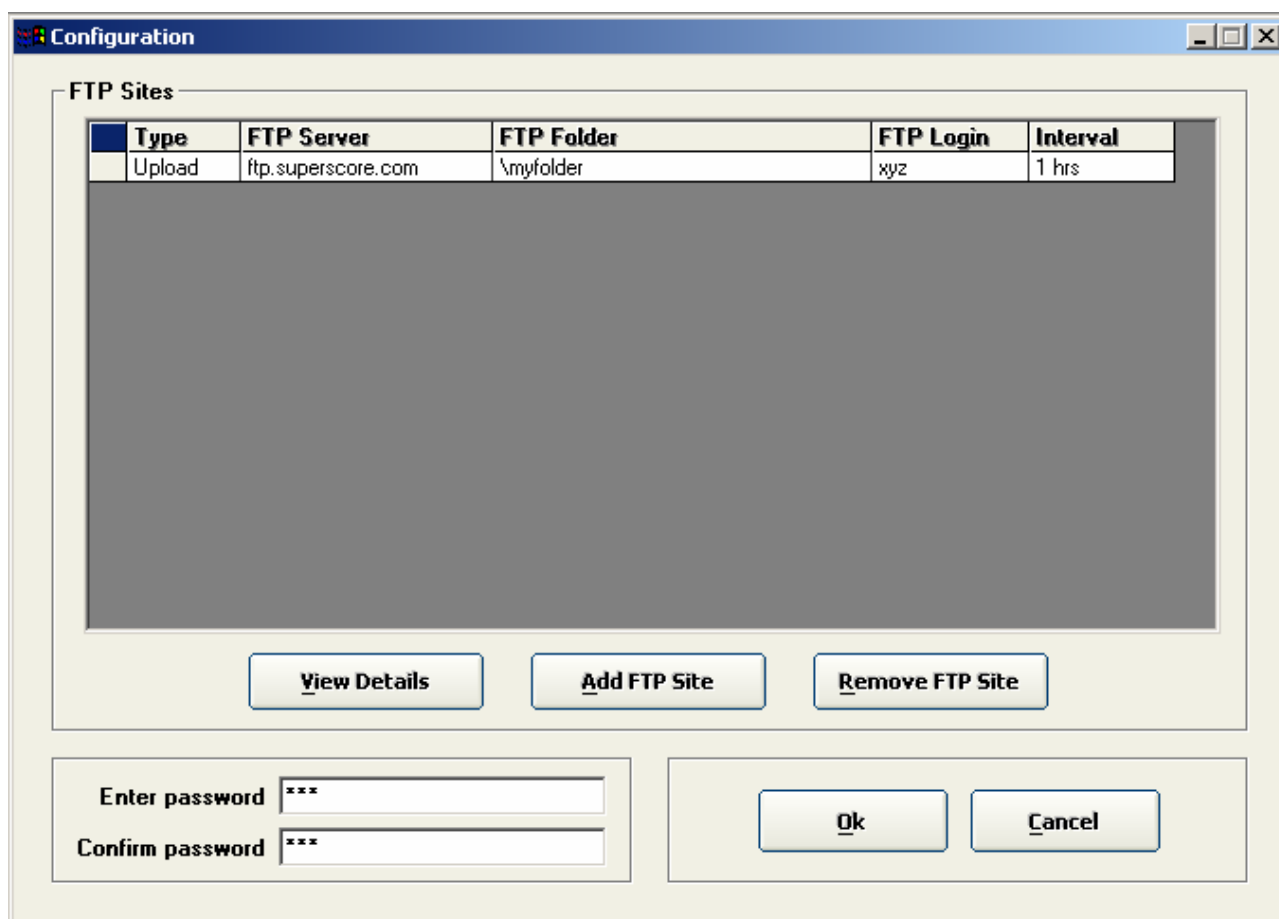
(viii) In the text box just below the check box, key in the extensions of the file types that are to be printed (e.g., **.doc** for **MS WORD** files, etc.), making sure to separate each extension by a comma.

For example, if you want all text and MS WORD files to be printed on download, key in “.txt, .doc” in the text box. This will ensure that if a particular downloaded file has either a “.txt” or a “.doc” extension, it will be printed after being downloaded. Please note that files with any other extension will not be printed.

Please note that the files will be printed to the system’s default printer. If no printer has been installed on your system, an appropriate message will be displayed in the file transmission monitor area. It won’t really be possible to provide a feature to configure a printer to which the files should be printed. The reason for this is that the programming interface that we’ve used to print files offers no feature to allow the user to select a particular printer. Therefore the only option is to have the files print to the system’s default printer.

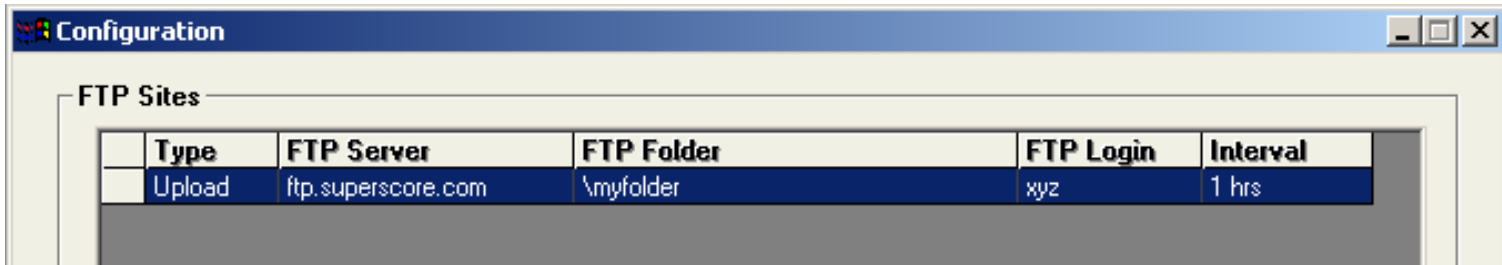
(ix) Click on <OK> to save the configuration data.

The FTP Site Configuration screen will unload and the main configuration screen will now look as below:



### **Modifying a FTP site configuration**

1. Select the FTP site that you wish to modify by clicking on the row on the grid that displays the site’s configuration data.
2. The selected row will appear to be shaded in blue, as shown below.



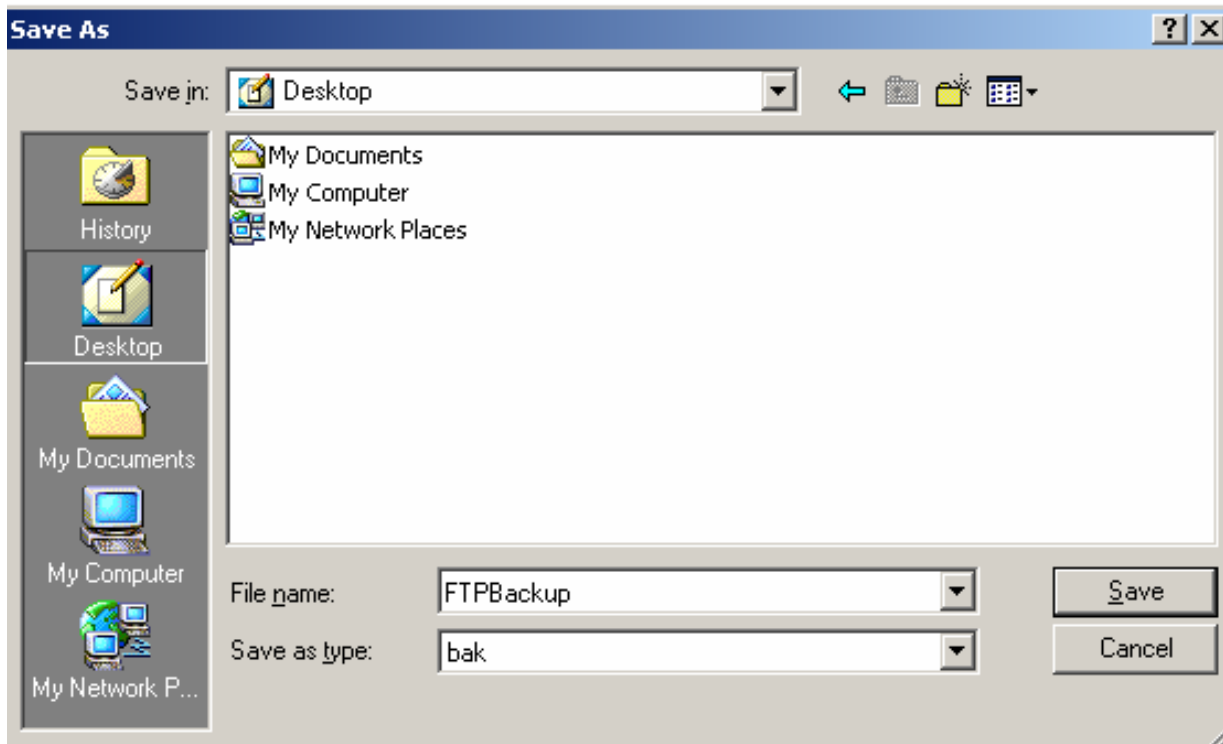
3. Click on the **"View Details"** button to bring up the Configuration details screen.
4. Modify the details as required.
5. Click on the OK button to save the changes.

### **Deleting a FTP site configuration**

1. Select the FTP site that you wish to delete by clicking on the row on the grid that displays the site's configuration data.
2. Click on the **"Remove FTP Site"** button.
3. You will be shown a confirmation prompt.
4. Click on **Yes** to remove the FTP site configuration.

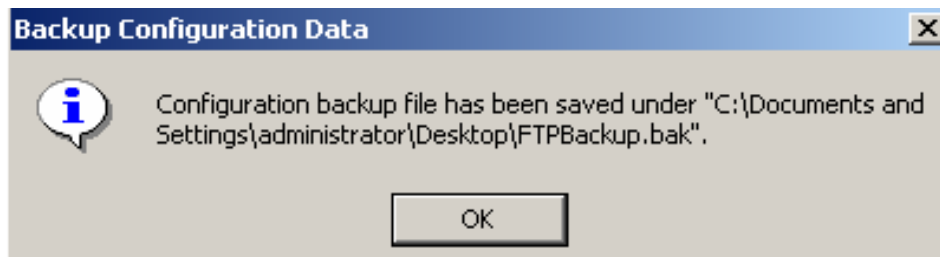
### **Backup Configuration Data**

1. Click on the **Configuration -> Backup Configuration Data** menu option.
2. After entering the password, you will be shown a **Save File Dialog** as shown below.



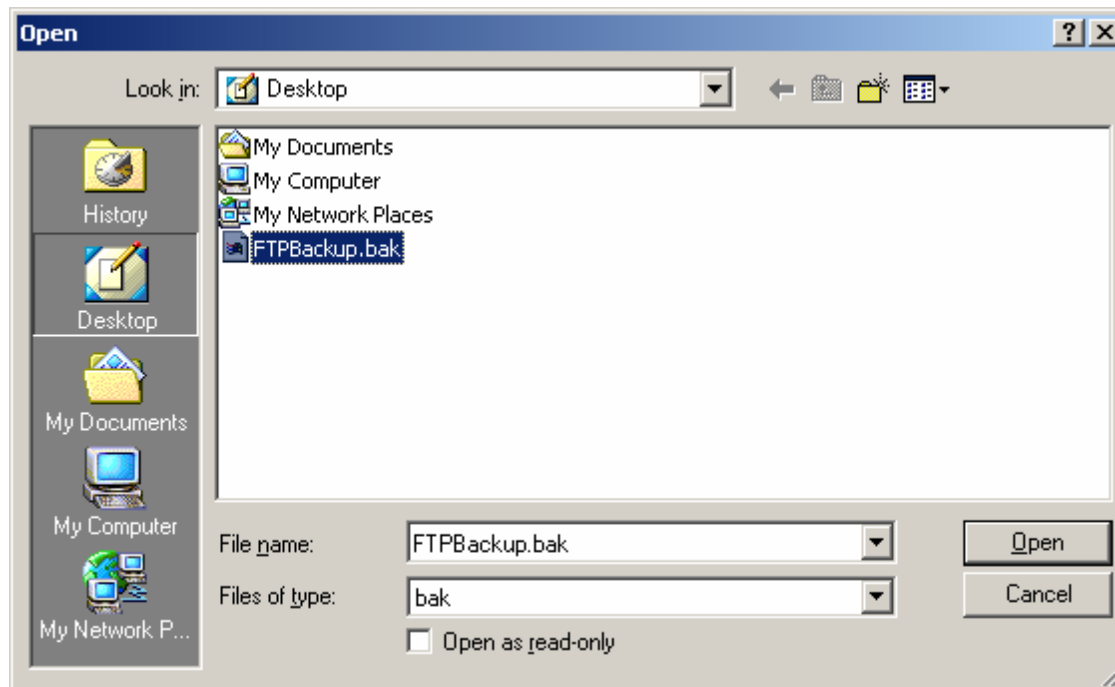
3. Browse to the folder where you wish to save the backup file.

4. Enter the name that you wish to give your backup file in the **File name** text area. In the screen shot above, **FTPBackup** is the name that has been given to the backup file. A **.bak** extension is automatically appended.
5. Click on the **Save** button to save the backup file.
6. You'll receive a confirmation prompt like the one below:

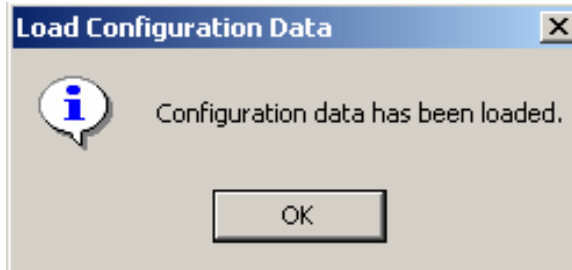


### Load Configuration Data

1. Click on the **Configuration** -> **Load Configuration Data** menu option.
2. Click **Yes** on the confirmation prompt that you receive.
3. After entering the password, you'll be shown an Open File dialog.
4. Browse to the folder where you've got your backup file saved.
5. Select the backup file as shown below

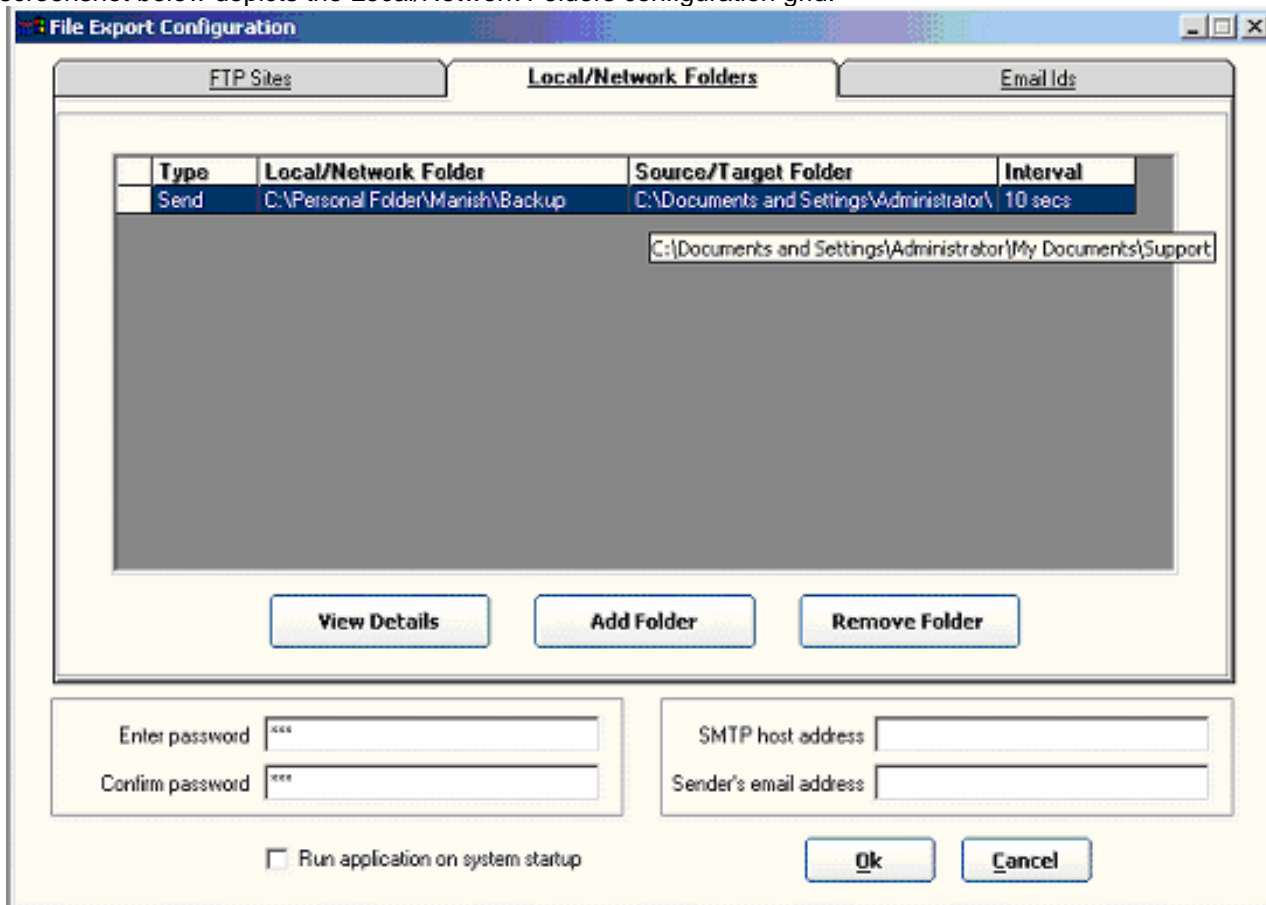


6. Click on the Open button to load the configuration data.
7. You will receive a confirmation prompt like the one below.



Taking a backup of the configuration data could be useful when for instance the user's system is to be formatted. This will save the user from the trouble of having to reconfigure all the sites after reinstalling the application.

To view the local/network folders configuration grid, click on the tab with the caption "**Local/Network Folders**". The screenshot below depicts the Local/Network Folders configuration grid.



Local/Network Folders configuration data may be added/edited/deleted in the same manner as the FTP Sites data, i.e. by using the **View Details/ Add Folder** and **Remove Folder** buttons respectively.



## Configuring Local/Network Folders

1. Click on the Add Folder button
2. The Local/Network Folders Configuration screen will pop up, as shown below.

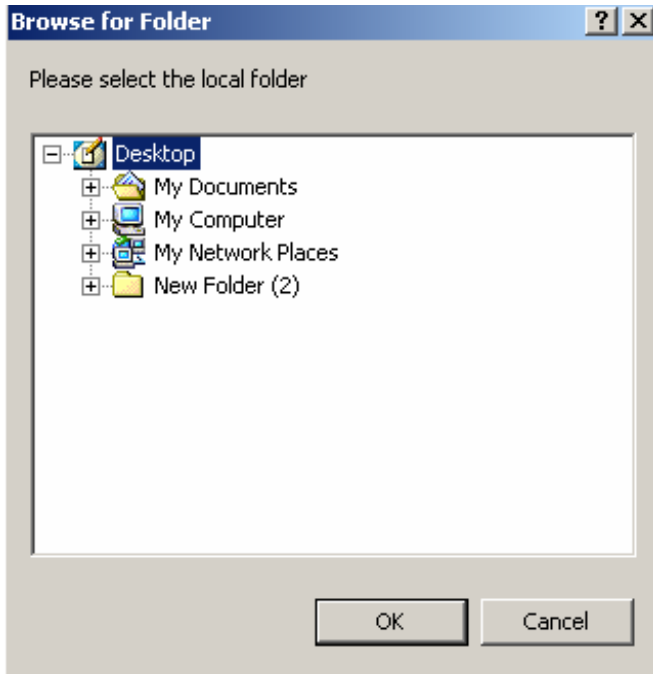
The screenshot shows a dialog box titled "Local/Network Folder Configuration". It contains several sections for configuring file transfer settings:

- Folder to monitor:** A text field containing "C:\Personal Folder\Manish\Backup" and a "Browse" button.
- Direction:** Two radio buttons: "Send files to this folder" (selected) and "Receive files from this folder".
- Compression:** A checkbox labeled "Compress & encrypt files before transmission".
- Source Folder:** A text field containing "C:\Documents and Settings\Administrator\My Documents\Support" and a "Browse" button.
- Backup Folder:** A text field containing "C:\Documents and Settings\Administrator\My Documents\SupportBackup" and a "Browse" button.
- Move to folder:** A text field and a "Browse" button.
- Move options:** A checkbox "Move compressed and encrypted files to different folder" and a checkbox "Delete source files after transmission".
- Print files:** A checkbox "Print files upon receipt" and a text field "Files of type (enter comma-separated extensions)".
- Monitoring:** Two radio buttons: "Monitor at fixed intervals every" (selected) with a value of "10" and unit "seconds", and "Monitor once daily at" with a time of "00:00" and unit "hours".
- Transmission:** A checkbox "Transmit files only if they are" with a dropdown menu set to "not older than" and a unit dropdown set to "seconds".
- Notification:** A checked checkbox "Send email notification upon transmission" and a text field "Email Id" containing "manishmukati@yahoo.com".
- Buttons:** "Ok" and "Cancel" buttons at the bottom.

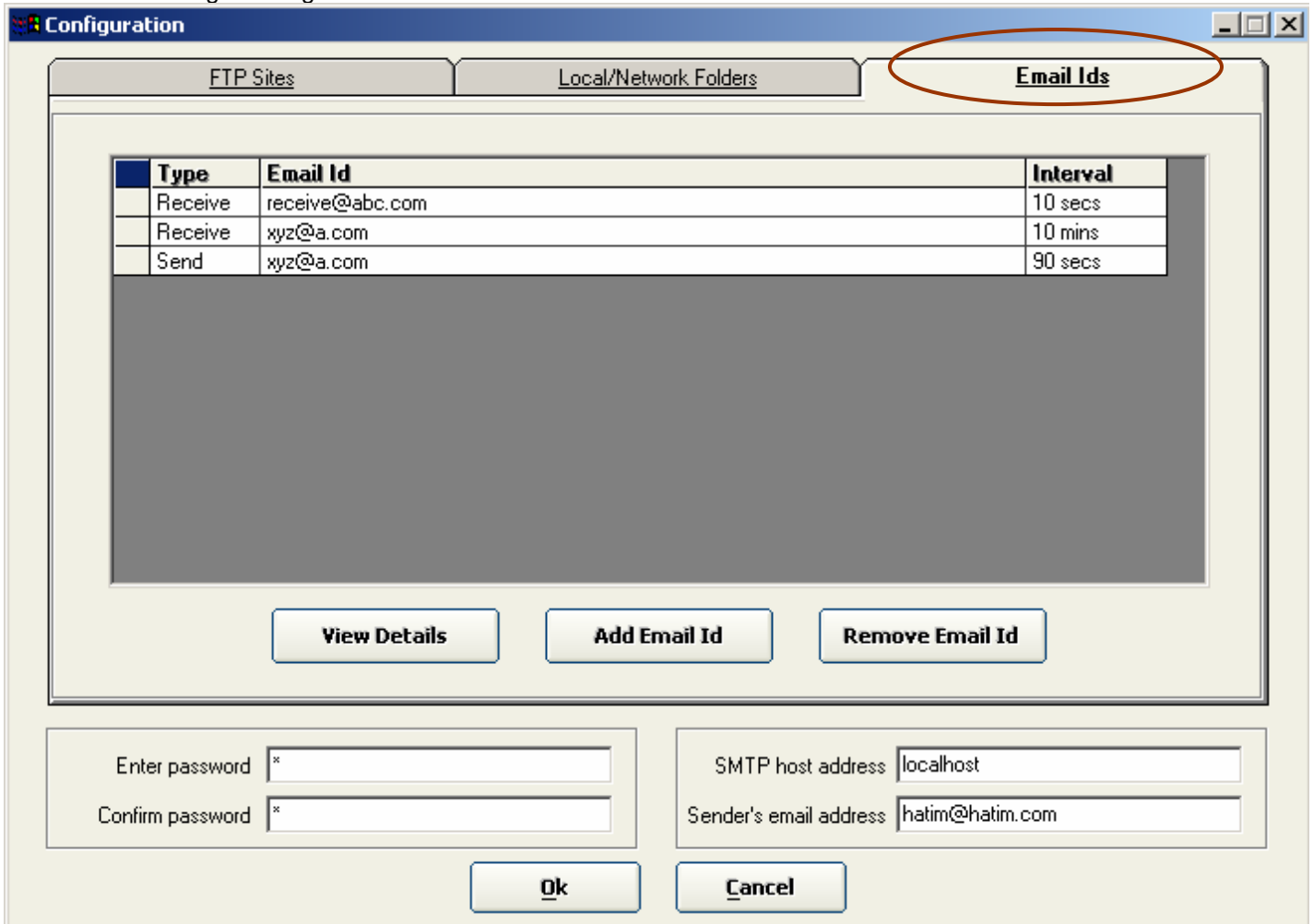
**Folder to monitor:** The local/network folder to which files will be transferred, or from where files will be copied.

**Local Folder:** In case files are being sent, this would be the source folder and in case files are being received, this would be the destination folder.

The rest of the contents on this screen serve the same purpose as on the FTP Site configuration screen. Click on the Browse buttons to select folders, including network folders, as shown below.



To view the email ids configuration grid, click on the tab with the caption "**Email Ids**". The screenshot below depicts the Email Ids configuration grid.



Email Ids configuration data may be added/edited/deleted in the same manner as the FTP Sites and Local/Network Folders data, i.e. by using the **View Details/ Add Email Id** and **Remove Email Id** buttons respectively.

### Configuring Email Ids

1. Click on the Add Email Id button
2. The Email Id Configuration screen will pop up, as shown below.

**Email Id Configuration**

Email Id to monitor

Send files to this email id       Receive files from this email id  
 Receive compressed & encrypted files

Target Folder

Backup Folder

Move compressed and encrypted files to different folder

Move to folder

Delete source files after transmission

Print files upon receipt

Files of type (enter comma-separated extensions)

Monitor at fixed intervals every  seconds

Monitor once daily at  hours

Transmit files only if they are  seconds

Send email notification upon transmission

Email Id

**Email Id to monitor:** The email id to which the files will be sent, or from where the files will be received.

**Local Folder:** In case the files are being sent, this would be the source folder and in case files are being received, this would be the destination folder.

The rest of the contents on this screen serve the same purpose as on the FTP Site configuration screen.

### Notes:

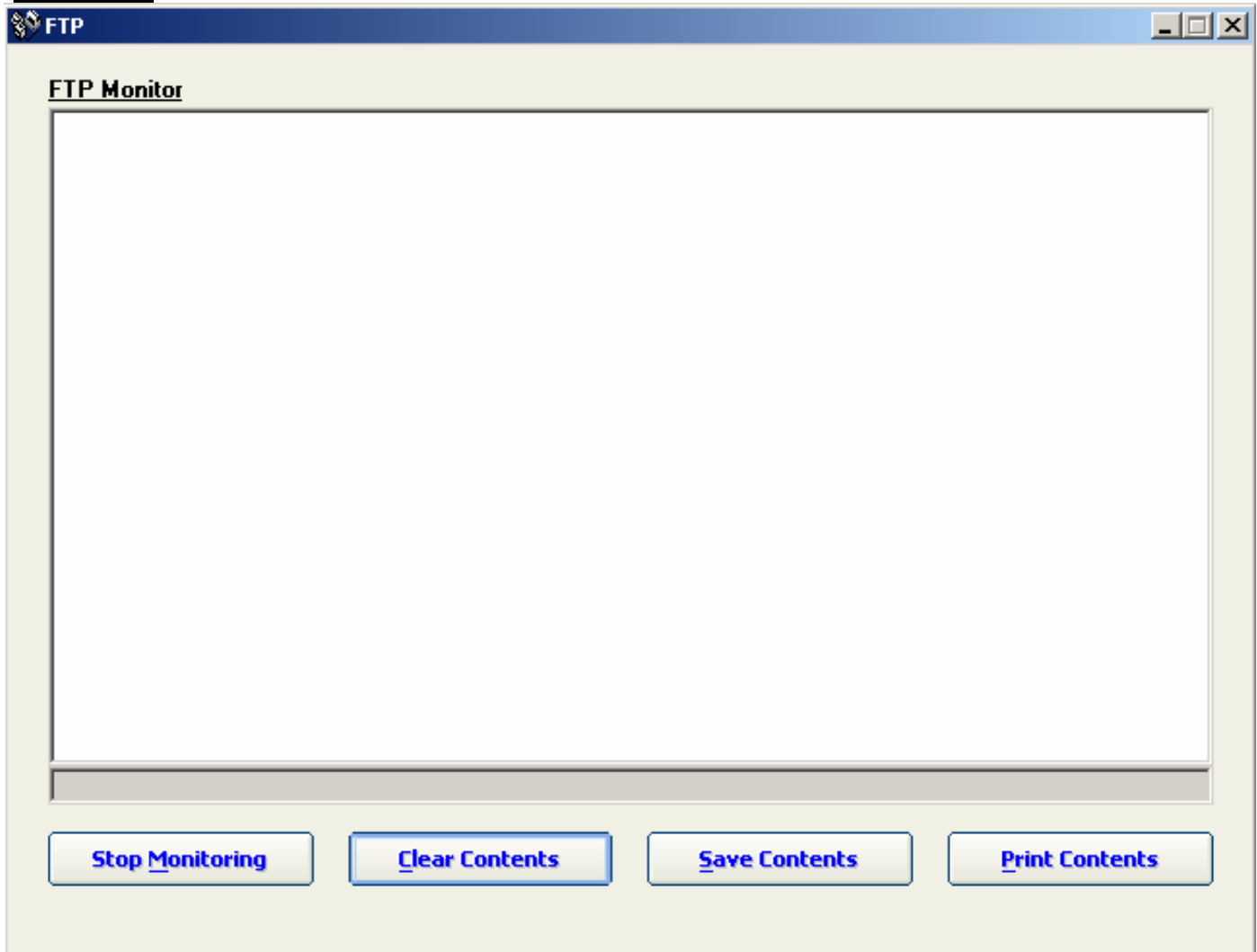
1. The email functionality added to this application makes use of the PC's underlying email sub-system, such as **Outlook Express**. As such, you should have an email system installed and configured on your PC.
2. If you've configured an email id to receive files, then that email account must also be added to **Outlook Express**. All mails received and addressed to that account, will then be scanned for any files that should be downloaded.

3. All files will be sent as email attachments to the recipient. Similarly, while scanning the inbox, all compressed and encrypted files received as attachments will be downloaded.
4. If an email id has been configured to download received files only and if they are older than/ not older than a specified time period, then this check will be applied to the date and time at which the email was received and **not** on the last modification date of each individual file.

For example, let us suppose that an email id has been configured to download received files only if they are not older than one hour. Assume that an email message was received 30 minutes ago, along with three files (attachments), one of which was created more than an hour ago. In this case, **all three files** will be downloaded since the email message was received less than an hour ago.

5. Received files will be scanned only amongst messages that are in your email system's Inbox and not in any other folder. As such, please do not redirect incoming mails for the configured email id into some other folder in your email system.
6. If a message in your Inbox is scanned and all files in that message are successfully downloaded, decompressed and decrypted, then that email message will be deleted from your Inbox.

### FTP Monitor



This screen provides continuous feedback on the processes taking place at any given time. All feedback messages related to file upload and download processes are displayed in the textbox.

All application messages are displayed in black, server messages in green and error messages in red.

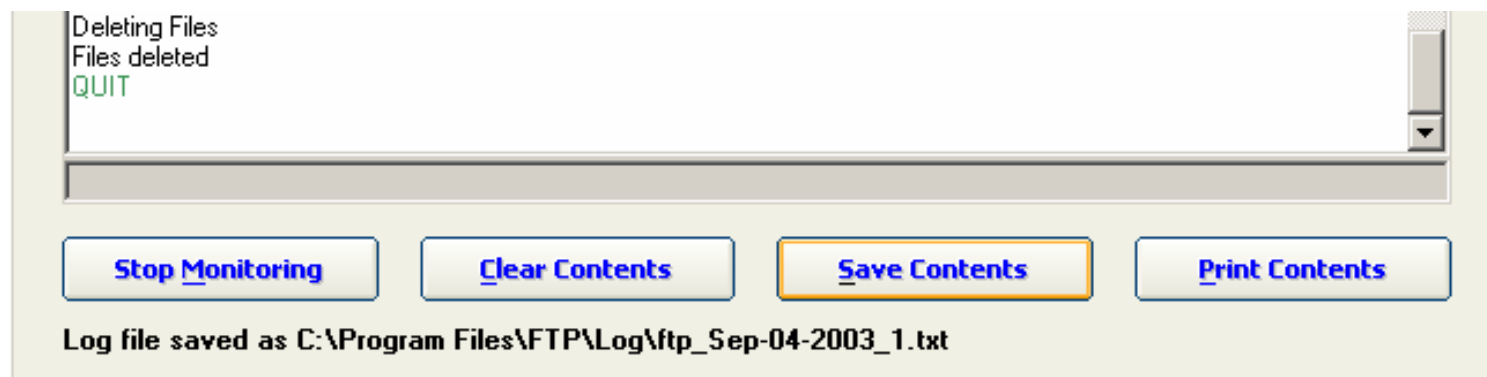
**Clear Contents:** This button clears the text in the FTP monitor text-area

**Save Contents:** This button saves the contents of the FTP monitor text area to a text file that is created in the **[Application Directory]\Log** folder.

The application directory would typically be **“C:\Program Files\FTP”**. As such the text file would be saved in the **“C:\Program Files\FTP\Log”** folder.

Once the file is saved, a message would appear at the bottom of the FTP monitor screen, confirming that the file has been saved. The message would also display the full file name (including the path name) of the file that has been saved.

An example is shown below:



**Print Contents:** This button prints the contents of the FTP monitor text area to the default system printer. If no printer has been configured, an appropriate error message is displayed.